

Tick Trek Adventure: The Assignment

(Read by educator OR first station to start)

Congratulations! You've just accepted your dream job as a wildlife photographer for *Wildlife Watching Magazine*. You've received an urgent email from your editor with a once-in-a-lifetime opportunity:

"URGENT: A rare, Purple-crested flycatcher has been spotted just an hour's drive north of your location at Brushy Meadows State Park. Your mission is to capture a photograph of the bird for our next summer edition of *Wildlife Watching Magazine*. You have 24 hours to email us a photo!"

Your adventure begins now! At each station there will be a prompt to read and a choice to make. Depending on your choice, you may pick up a bead or not. You will carry your beads in a paper bag and then move to your next station as instructed.

Pick up a bag here.

Tick Trek Adventure: Pack your bags!

You have your camera ready, but you also need to bring a backpack packed with the essential items for your adventure. **Do you choose Pack A or Pack B?**

Pack A:

- Sunscreen
- Hat
- Smart phone and charger
- Second pair of shorts
- Second t-shirt
- Sandals
- Stopwatch
- Field guide
- Water

Pick up special token for **Pack A (blue)**
Roll the die and go to the station with the number you roll.

Pack B:

- Insect repellent
- Plastic baggies
- First Aid Kit (bandages, hand sanitizer and tweezers)
- Long pants
- Long-sleeved shirt
- Boots
- Hat
- Long socks
- Water

Pick up special token for **Pack B (orange)**
Roll the die and go to the station with the number you roll.



Tick Trek Adventure: Station 1

Park Information Station: The door is closed but at the entrance you read a sign that says, “Did you know? As global temperatures rise, tick populations are expanding, and cases of Lyme disease are on the rise in new areas. Stay vigilant!”

Go to Station 3.

Tick Trek Adventure: Station 2

Park Information Station: You stop and chat with the ranger, who tells you that ticks are known to be in the area. They suggest that you change into long sleeves, pants, and tuck your pants into your socks for tick protection.

If you have the **Pack A (blue)** token, **go to Station 5.**

If you have the **Pack B (orange)** token, you can change into long pants. Pick up a bead and go to **Station 4.**



Tick Trek Adventure: Station 3

Park Information Station: The ranger tells you the bird was spotted earlier today. They advise you to stay on the trail while in the park to reduce your chances of getting a tick.

Go to Station 2.

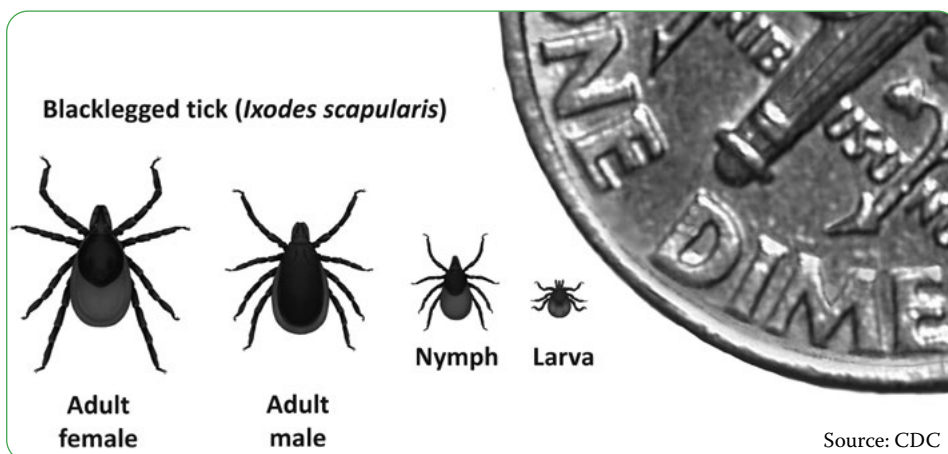
NOTE: If you have already visited Station 2, go to Station 7.

Tick Trek Adventure: Station 4

Park Information Station: You grab a map that includes facts about the size of ticks. What do you choose to do?

If you read the information about the size of ticks, **go to Station 6.**

If you don't read the tick information and just look at the map, pick up a bead and **go to Station 1.**



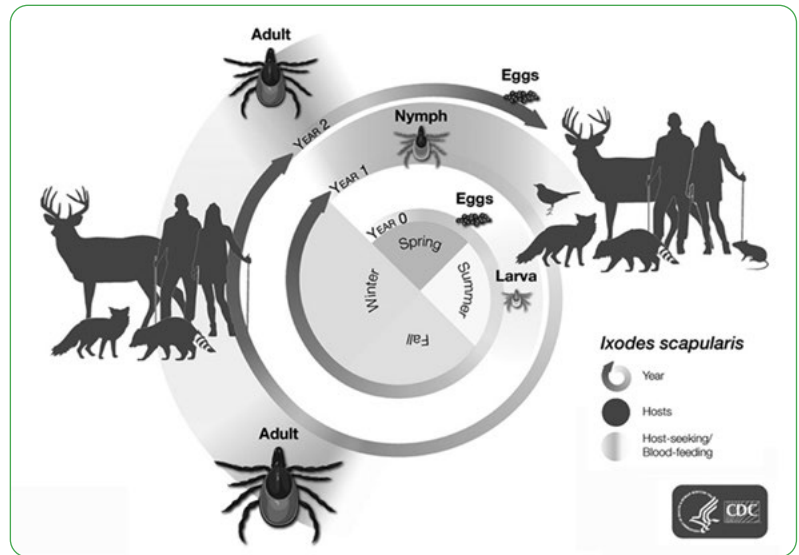
NOTE: If you have already visited Station 1, go to Station 7.

Tick Trek Adventure: Station 5

Park Information Station: You see a poster that shows the life cycle of the blacklegged tick. It is spring during your adventure. You study the poster and realize that adult and nymph ticks could be out this month.

If you want to learn more about the size of ticks, **go to Station 4.**

If you decide not to read more about tick size, pick up a bead and **go to Station 6.**



Tick Trek Adventure: Station 6

Park Information Station: You read a sign that lists several EPA-registered insect repellents to use to repel ticks.

If you have the **Pack A (blue)** token, you do not have any insect repellent with you. Pick up a bead, and **go to Station 1.**

NOTE: If you have already visited Station 1, go to Station 8.

If you have the **Pack B (orange)** token, you can apply insect repellent. **Go to Station 5.**

NOTE: If you have already visited Station 5, go ahead to Station 7.

Tick Trek Adventure: Station 7

On the Trail: As you hike deeper into the park, the trail starts to split. What do you choose to do?

If you follow the main trail which is wider and well-traveled but longer, **go to Station 9.**

If you take the path that was made by wildlife and is more narrow, and that goes through more dense forest, pick up a bead. **Go to Station 8.**

NOTE: If you have already visited Station 8, go ahead to Station 10.

Tick Trek Adventure: Station 8

On the Trail: Walking along the trail you encounter a muddy puddle. What do you choose to do?

If you step off the trail and into the tall grass to avoid the mud, pick up a bead.

Go to Station 9.

NOTE: If you have already visited Station 9, go ahead to Station 10.

If you walk through the puddle and get muddy boots, **go to Station 7.**



Tick Trek Adventure: Station 9

On the Trail: You see a fellow hiker walking a dog. What do you choose to do?

If you wave and continue walking, **go to Station 10.**

If you stop and ask to pet the dog, pick up a bead.
Go to Station 8.

NOTE: If you have already visited Station 8, go ahead to Station 10.

Tick Trek Adventure: Station 10

On the Trail: While hiking, you spot a sign with information about how to prevent tick bites. What do you choose to do?

If you stop and read the sign, pick up a bead.
Go to Station 11.

If you don't stop and continue walking, **go to Station 12.**



Tick Trek Adventure: Station 11

Hitchhiker: While hiking, you feel something crawling up your arm- it's a tick! What do you choose to do?

If you decide to brush the tick off and keep walking, or if you have the **Pack A (blue)** token, **go to Station 12**.

If you have the **Pack B (orange)** token, you have the option to carefully place the tick in a plastic baggie to submit for surveillance data. If you decide to do this, pick up a bead and **go to Station 13**.

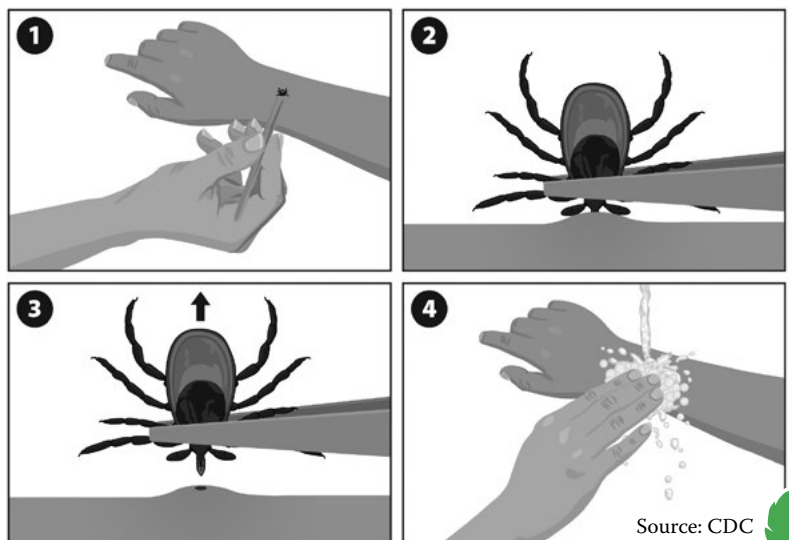
Tick Trek Adventure: Station 12

Hitchhiker: While hiking, you feel something on your arm – it's a tick and it's attached.

If you have the **Pack A (blue)** token, you remove the tick with your fingers, by grabbing close to the skin and pulling straight out.

Go to Station 13.

If you have the **Pack B (orange)** token, open your first aid kit and find the tweezers. Grab the tick as close to your skin as you can and pull straight out to remove the tick. Apply hand sanitizer around the wound afterward. **Go to Station 14.**

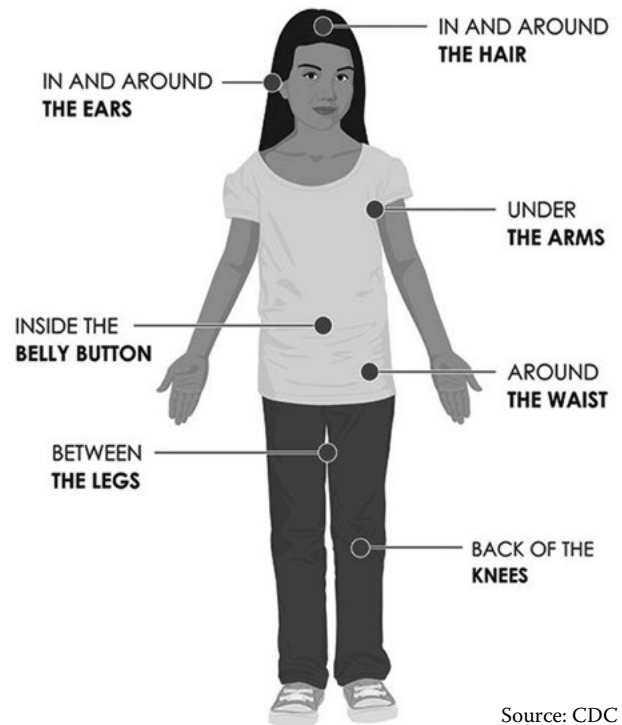


Tick Trek Adventure: Station 13

Hitchhiker: While hiking, you feel something tickle your arm, but it's just a leaf from a bush.

If you stop and do a tick check,
go to Station 14.

If you don't do a tick check,
pick up a bead.
Go to Station 14.



Tick Trek Adventure: Station 14

Spotting the Bird: You've reached the spot where the Purple-crested flycatcher was last seen.

Count the number of beads you've collected so far.

If 5 or less beads, roll one die.

If 6 or more beads, roll two dice.

If you **roll a 5 or above**, the bird is on a very high branch and hard to see, but you take a photo anyway. **Go to Station 15.**

If you **roll below a 5**, you capture the perfect photo of the bird!
Pick up the Bird Photo token. **Go to Station 16.**

Tick Trek Adventure: Station 15

Heading home: While walking back you spot a rare albino (all white) deer in the dense thicket ahead. You use your camera to zoom in for a closer look. You can see there are ticks attached to the white fur. What do you choose to do?

If you stay still and quietly observe the animal from afar, **go to Station 17.**

If you try to push through the bushes to get this once-in-a-lifetime bonus picture, pick up a bead. **Go to Station 18.**

Tick Trek Adventure: Station 16

Heading home: While walking back, you spot an opossum cleaning its fur. You use your camera to zoom in for a closer look. You can see that the opossum is covered with ticks, and it is eating them. What do you choose to do?

If you stay still and quietly observe the animal from afar, **go to Station 17.**

If you try to push through the bushes to get this once-in-a-lifetime bonus picture, pick up a bead. **Go to Station 18.**



Tick Trek Adventure: Station 17

Heading home: On your walk back, you spot a small bird fluttering around a bush. You use your camera to zoom in for a closer look. You watch closely and realize the bird is eating ticks off the bush. What do you choose to do?

If you stay still on the path and quietly observe the animal from afar, go to **Station 19**.

If you stay longer, trying to get a video of the bird, pick up a bead.
Go to Station 20.

Tick Trek Adventure: Station 18

Heading home: On your walk back, you spot a group of wild turkeys pecking at the ground. You use your camera to zoom in for a closer look. You watch closely and realize the turkeys are eating ticks. What do you choose to do?

If you stay still on the path and quietly observe the turkeys from afar, go to **Station 19**.

If you stay longer, trying to get a video of the bird, pick up a bead.
Go to Station 20.



Tick Trek Adventure: Station 19

At home: You've made it home and you decide to clean up from your hike. What do you choose to do?

If you don't think you got very sweaty, you simply change into comfortable clothes and toss the clothes you were wearing on the floor. Pick up a bead. **Go to Station 21.**

If you decide to put your clothes directly in the wash on hot or into the dryer for 15 minutes, **go to Station 20.**

NOTE: If you have already visited Station 20, go ahead to Station 21.

Tick Trek Adventure: Station 20

At home: You decide to do a tick check. What do you choose to do?

If you do a thorough tick check in the mirror, looking on your back, in your hair, and in your belly button, **go to Station 21.**

If you quickly glance at your arms and legs, pick up a bead and **go to Station 19.**

NOTE: If you have already visited Station 19, go ahead to Station 21.



Tick Trek Adventure: Station 21

At home: You find a tick that is attached and decide to remove it, but you are not sure about the best way to do so. What do you choose to do?

You find tweezers. You remember reading about how to remove a tick by grabbing it with tweezers and pulling straight up. Remove the tick with tweezers and **go to Station 22.**

You don't find tweezers. However, you remember reading a poster from the park that says it's best to remove ticks with tweezers but using your fingers to pull straight up is ok too. Remove the tick with your fingers. **Go to Station 22.**

Tick Trek Adventure: Station 22

At home: You found a tick that is attached, and you removed it, but now you have a tick bite. It's time to keep an eye on it. What do you choose to do?

If you put a bandage on the bite mark and hope it goes away, pick up a bead. **Go to station 23.**

If you check the bite mark daily for redness and swelling, and see a doctor if rash or fever develops, **go to Station 23.**



Tick Trek Adventure: Station 23

The End of the Journey: Congratulations on completing your adventure. It's time to count your beads.

Count the number of **white** beads you've collected. These beads represent extra time that was taken during the 24-hour deadline.

- If you have 3 or less white beads, you successfully submitted the photo! Pick up a Photo on Time token.
- If you have 4 or more white beads, you missed the deadline to submit your photo.

Now, count the number of **black** beads. These represent the number of tick encounters you had.

- If 4 or less beads, you avoid getting a vector-borne disease. Pick up a Stay Healthy Outside token.
- If 5 or more beads, you have flu-like symptoms (fever, headache, and tiredness) and a rash that is starting to look like a bullseye. You might have Lyme disease and need to see a doctor right away.

