



ASSOCIATION of FISH & WILDLIFE AGENCIES

MANAGEMENT
ASSISTANCE TEAM

LEARN • LEAD • CHANGE

MANAGEMENT ASSISTANCE TEAM

2020

YEAR IN REVIEW



MANAGEMENT ASSISTANCE TEAM

CHARGE

The Management Assistance Team (MAT) work is funded by a Multistate Conservation Grant. MAT is charged with increasing the leadership capacity and agency effectiveness within state fish and wildlife agencies and the conservation community through leadership and organizational development initiatives, training, consulting, and support of the National Conservation Leadership Institute (NCLI).

VISION

MAT's vision to "further the conservation goals of state fish and wildlife agencies through organizational and leadership development of agency staff at all levels" is achieved by MAT's products and services which concentrate on agency administration—the people part of the equation.

2020 MAT

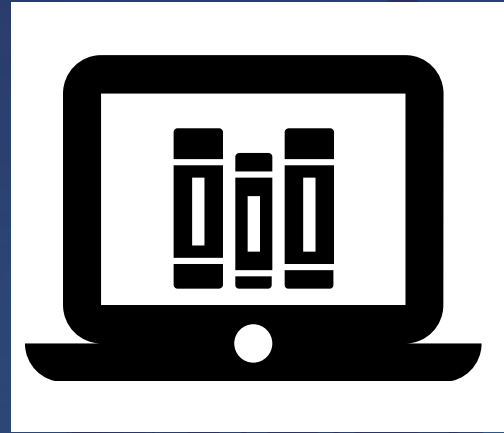
HOW WE SERVED

In 2020, MAT was able to respond to the urgent need for engagement, connectivity, and continued professional development, even in the midst of a pandemic, by ...



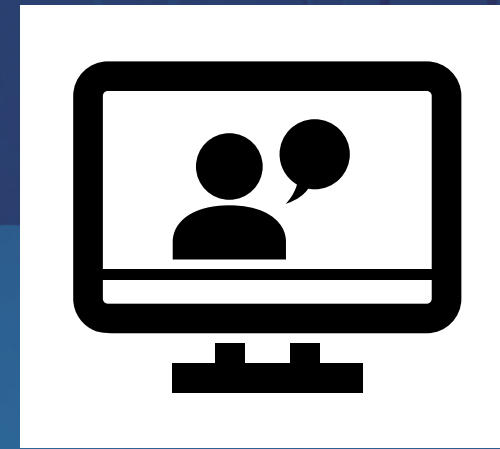
LEADERSHIP

HOW WE SERVED



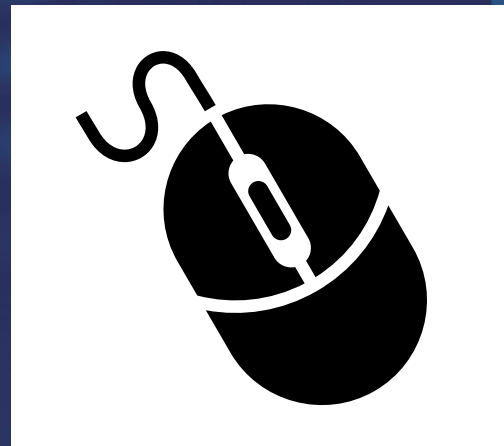
ONLINE COURSE

19 Online Courses Delivered
348 Students



LIVE WEBINARS

86 Live Webinars
1,801 Students
(400% Increase in 2020)



ON-DEMAND WEBINARS

3 On-Demand Webinars
1,568 Views



CONSULTING

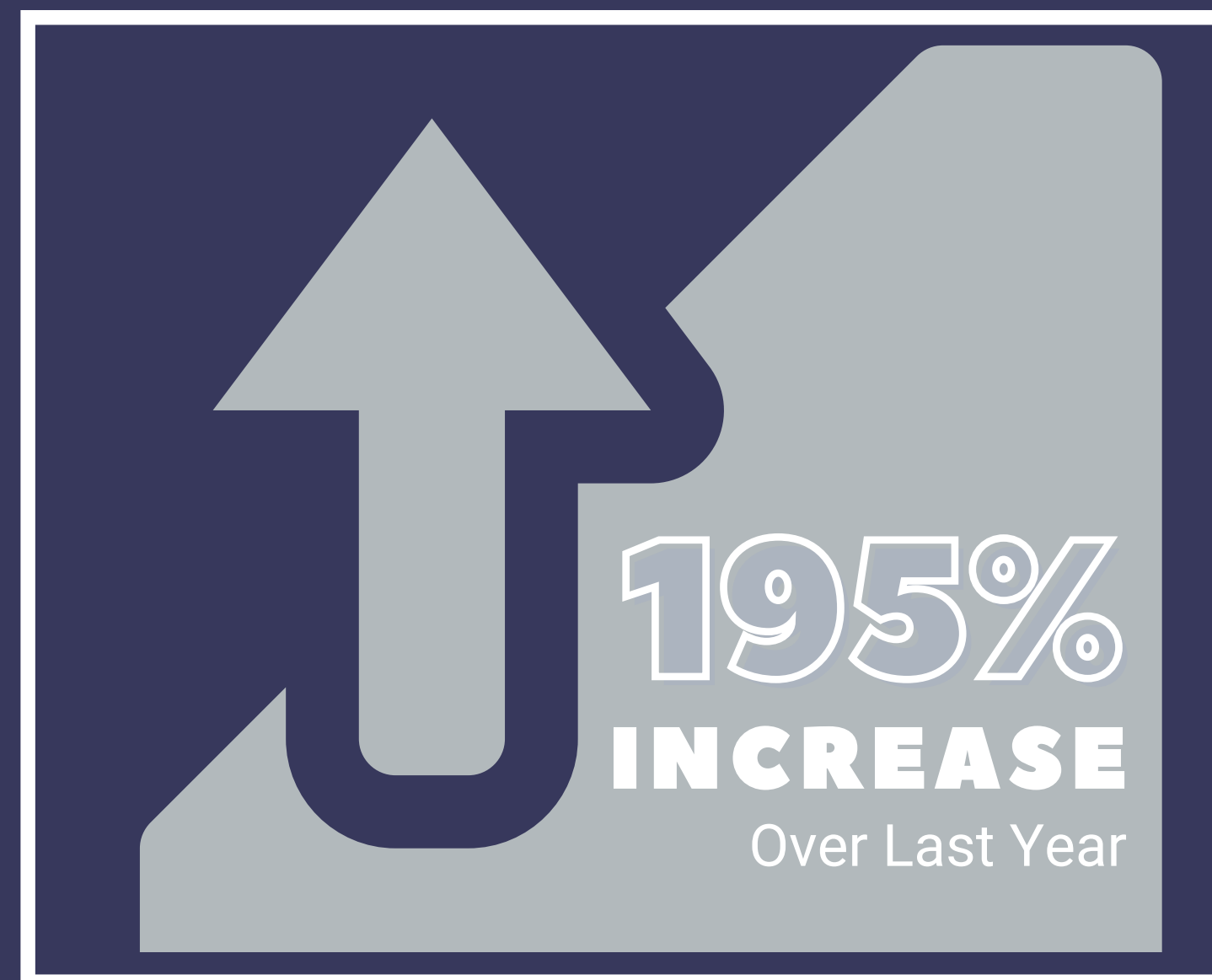
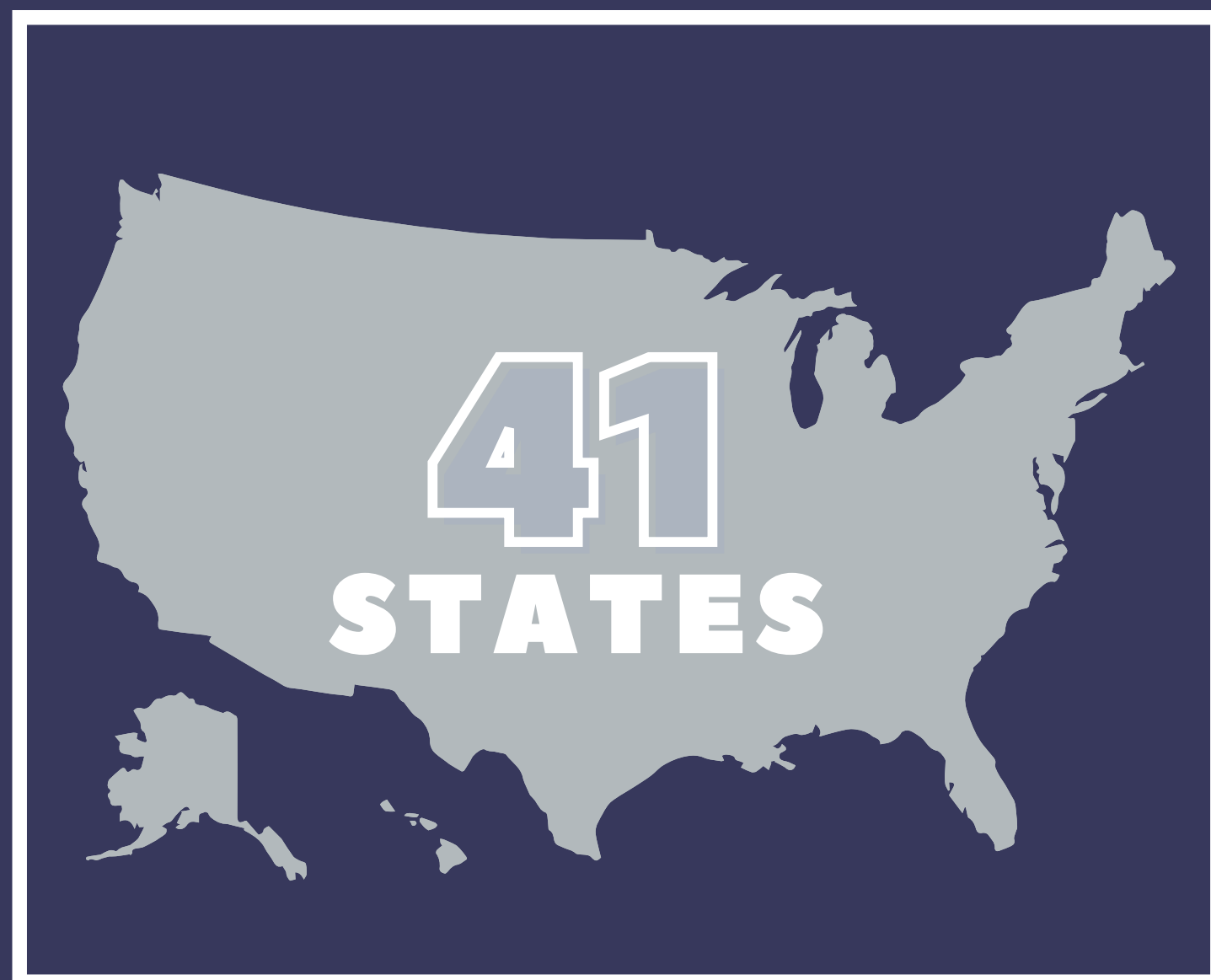
9 State Agency Consultations

STATES SERVED

STATE FISH AND WILDLIFE AGENCIES SERVED IN 2020

2020

**Year In
Review**





NATIONAL CONSERVATION
LEADERSHIP INSTITUTE

NATIONAL CONSERVATION LEADERSHIP INSTITUTE

PURPOSE

The National Conservation Leadership Institute (NCLI) was established in 2005 to help develop future conservation leadership to address the daunting challenges facing our ever-changing world...socially, politically, and—yes— environmentally.

Across conservation we are facing difficult questions of sustainability, organizational relevancy, funding shifts, and climate change. At the heart of all of these, we find ourselves wrestling not only with the science-based issues but also the increasingly complex human element.



THE NCLI IN 2020

This past year brought on even greater challenges with the onset of Covid-19 and the dramatic shifts to 'how we do business' in our community.

ACCOMPLISHMENTS

2020
Year In
Review

✓ **Cohort 14 Graduation**

✓ **12 Alumni Webinars**
86 Alumni Participated
235 Seats Filled

✓ **2021 Alumni Conference Planning**



**NCLI
ALUMNI
496 STRONG**

Organizational Breakdown

Tribal/Native American

6 Tribes

Federal

8 Agencies

Industry

10 Organizations

Non-Governmental

31 Organizations

State Fish & Wildlife

45 Agencies



**2020
Year In
Review**

CONTACT US

For more information on MAT's products and services

WWW.FISHWILDLIFE.ORG/AFWA-INSPIRES/MAT-TEAM

For more information on the NCLI

WWW.CONSERVATIONLEADERSHIP.ORG

