



# CASE STUDY

## South Dakota Game, Fish and Parks



ASSOCIATION of  
FISH & WILDLIFE  
AGENCIES

### Private Lands Working Group

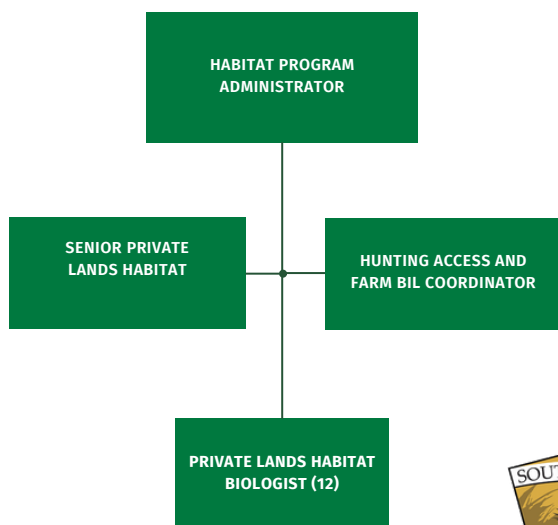
Agriculture Conservation Committee



## STATE AGENCY PRIVATE LANDS PROGRAM CASE-STUDY

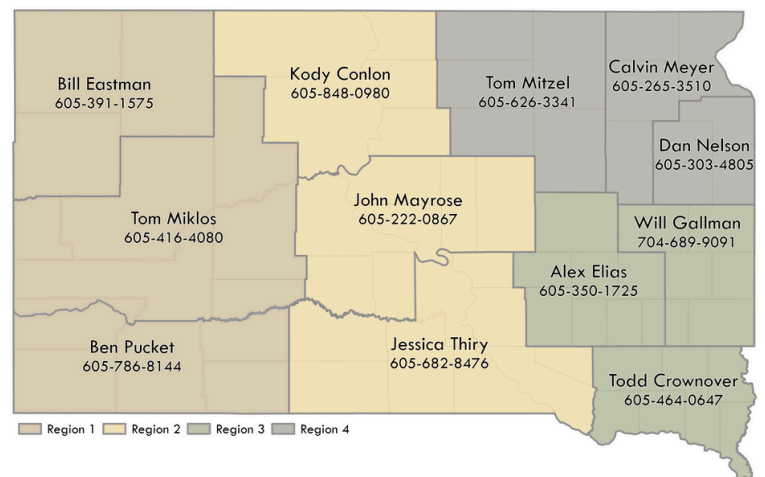
The South Dakota Game, Fish and Parks (SDGFP) private lands program was initiated in 1977. South Dakota is 80 percent privately-owned and landowners play a significant role in providing wildlife habitat and outdoor opportunities like hunting and fishing. South Dakota's private lands program organizational structure has direct supervision of private lands habitat biologists at the regional level, and four regional terrestrial resources supervisors.

**Figure. Private Lands Program Organizational Chart**



The department offers a variety of programs available for private landowners to help create wildlife habitat, public hunting access, and reduce wildlife damage.

### Private Lands Habitat and Access Biologists



# STATE AGENCY PRIVATE LANDS PROGRAM CASE-STUDY: SOUTH DAKOTA

## PRIMARY FEDERAL PROGRAMS USED TO DELIVER PRIVATE LANDS CONSERVATION:

USFWS Partners for Fish and Wildlife Program, Federal Farm Bill Programs including Conservation Reserve Program, Wetland Reserve Easements, Environmental Quality Incentives Program, and Conservation Stewardship Program.

### PRIMARY PROGRAMS

*South Dakota Game, Fish, and Parks Private Lands Habitat Program include:*

- Riparian Habitat Enhancement Program
- Habitat Fencing Program
- Perennial Pollinator/Brood Habitat
- Grassland Restoration Program
- Working Wetland and Grassland Program
- Woody Habitat Program
- Food Habitat Program
- Second Century Working Lands Habitat Program
- 5 Public Access Programs

### EMPLOYEE RECRUITMENT

- Internal, external conservation organizations (e.g. PF, NRCS)
- Recent college graduates (South Dakota State)



### PRIMARY PARTNERS

- USDA
- USFWS
- Ducks Unlimited
- Pheasants Forever
- American Bird Conservancy
- Bird Conservancy of the Rockies
- National Wild Turkey Federation
- SD Grassland Coalition
- SD Soil Health Coalition
- SD Conservation Districts
- SDSU Extension
- Northern Great Plains Joint Venture
- Prairie Pothole Joint Venture
- Audubon Dakota
- World Wildlife Federation

### PRIMARY FUNDING

- Pittman-Robertson fund
- License fees
- North American Wetlands Conservation Act
- National Fish and Wildlife Foundation
- USDA Programs



## PRIMARY MARKETING AND ENGAGEMENT STRATEGIES YOUR AGENCY USES TO ENGAGE PRIVATE LANDOWNERS

The Habitat Pays website ([habitat.sd.gov](http://habitat.sd.gov)) is an important outreach tool as is the engagement SDGFP has with the South Dakota Grazing Coalition. The Landowner and Habitat Programs website ([gfp.sd.gov/landowner-programs](http://gfp.sd.gov/landowner-programs)) is also a key engagement tool.

## SOUTH DAKOTA PRIVATE LANDS CONSERVATION EFFORTS: WHAT WORKS?

- Outreach in any form tends to initiate new interest in habitat/conservation program and practices.
- Identifying land and landowners where certain conservation practices/programs may be applicable to an operation and then directly reaching out in the form phone calls, mailings, producer visits has been successful in SD.
- Partners promoting each other's program through direct conversation and referrals has worked well.

## SOUTH DAKOTA PRIVATE LANDS CONSERVATION EFFORTS: CHALLENGES?

- Follow up/landowner relationship building post project implementation.
- Actual project assessments post project installation.
- Providing adequate training.
- Maintaining relationships with conservation partners.
- Locating job applicants with background and experience
- Partnerships with other conservation organizations and agencies is essential to make a difference.

**Supporting Information:** Landowner Stories ([habitat.sd.gov/landowners/ciani.aspx](http://habitat.sd.gov/landowners/ciani.aspx)) and Habitat Pays Website: ([habitat.sd.gov](http://habitat.sd.gov))

### FOR MORE INFORMATION CONTACT:

Will Newman, [William.Newman@tpwd.texas.gov](mailto:William.Newman@tpwd.texas.gov)  
Ray Aberle, [Raymond.aberle@state.co.us](mailto:Raymond.aberle@state.co.us)

PRODUCT OF THE AFWA AGRICULTURE  
CONSERVATION COMMITTEE  
PRIVATE LANDS WORKING GROUP

