



CASE STUDY

Texas Parks and Wildlife Department



ASSOCIATION of
FISH & WILDLIFE
AGENCIES

Private Lands Working Group

Agriculture Conservation Committee

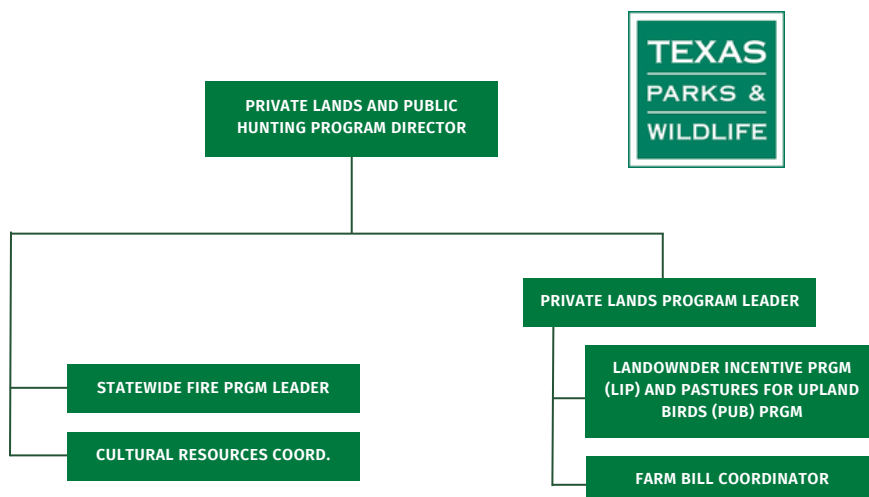


STATE AGENCY PRIVATE LANDS PROGRAM CASE-STUDY

The Texas Parks and Wildlife Department (TPWD) private lands program has its roots in the 1960s with the current program formally established in 2017. The goal of Texas's Private Lands and Habitat Program is to provide advice and information to private landowners interested in the conservation and development of wildlife habitat on their property.

Figure: Private Lands Program Organizational Chart

The TPWD Small Game Program also provides significant program staff and funding support internal and partner led programs. Key staff NOT organized under the Private Lands Program include: the Small Game Program Director, Statewide Game Bird Specialist, Waterfowl Program Leader, Wild Turkey Program Leader, Upland Game Bird Program Leader, Conservation Partnership Program Leader, and the OPJV Conservation Delivery Specialist.



PRIMARY SOURCES OF NEW PRIVATE LANDS EMPLOYEES:

TPWD relies on ~12 in-state university wildlife degree programs to produce qualified wildlife biologists. The universities and TPWD form an active community centered around the Texas Chapter of The Wildlife Society providing access to career development/internship opportunities for students at TPWD. TPWD has ~110 District Biologist positions in the state, with a turnover rate that requires ~10 District Biologist hires per year. Note: District Biologists are NOT supervised by the Private Lands Program, but by the Regional Directors.

STATE AGENCY PRIVATE LANDS PROGRAM CASE-STUDY: TEXAS

PRIMARY PARTNERS

- USFWS Partners for Fish and Wildlife Program
- USFWS State Wildlife Grants
- Natural Resource Conservation Service (NRCS)
- Farm Service Agency (FSA)
- Texas A&M-Agri-life Extension
- Quail Forever
- Land Trusts
- Audubon Texas
- Private Consultants
- Long Leaf Alliance
- National Wild Turkey Federation
- Ducks Unlimited
- American Bird Conservancy
- USFWS



PRIMARY PROGRAMS

- Pastures for Upland Birds (PUB)
- Voluntary Public Access Program (VPA)
- River Access and Conservation Areas (RACA)
- Texas Wildlife Association (TWA) Small Acreage – Big opportunity (SABO)
- Northeast Texas Conservation Delivery Network (NE TX CDN) – Habitat Incentive Program (HIP)
- Gulf Coast Joint Venture (GCJV) Coastal – GRIP
- Rio Grande Joint Venture (RGJV) South Texas GRIP
- Southern Great Plains GRIP
- The Texas Prairie Wetlands Project (TPWP)



PRIMARY FUNDING

- Pittman-Robertson Funds
- License Sales
- Lonestar Lands Stewards Program
- License Plate fees



TEXAS PRIVATE LANDS CONSERVATION EFFORTS: WHAT WORKS?

- Partners for Upland Birds
- Landowner Incentive Program
- Building a community of practice, customers and project managers (bios), networking through partners
- Paying for >75% of cost for implementation.
- Dedicated grant specialist
- Dedicated staff Farm Bill
- Inter-agency workshops
- Regularity of funding for programs
- Program staff ingrained with district staff and partners

TEXAS PRIVATE LANDS CONSERVATION EFFORTS: CHALLENGES?

- Expertise/experience
- NOT enough full time Employees
- Inconsistency/regularity funding
- Agency/Division priority for private lands programs
- Inconsistency and unpredictability of federal partner programs

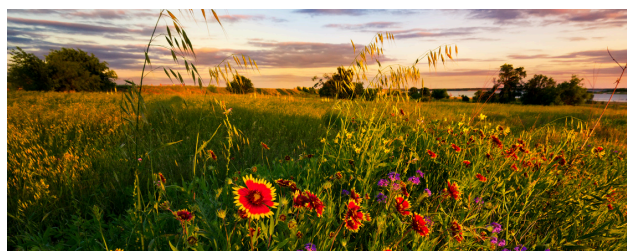
PRIMARY MARKETING AND ENGAGEMENT STRATEGIES YOUR AGENCY USES TO ENGAGE PRIVATE LANDOWNERS

- Direct customer service engagement with TPWD District Biologists through regulatory activity, managed WTD permitting, 1-D-1 tax valuation.
- Workshops/field days
- Partner events
- Partner webinars
- TPWD Diversity Program webinars

Supporting Information

Private Lands and Habitat Program:
tpwd.texas.gov/landwater/land/private

Pastures for Upland Birds:
tpwd.texas.gov/landwater/land/habitats/post_oak/upland_game/pub



FOR MORE INFORMATION CONTACT:
Will Newman, William.Newman@tpwd.texas.gov
Ray Aberle, Raymond.aberle@state.co.us

PRODUCT OF THE AFWA AGRICULTURE
CONSERVATION COMMITTEE
PRIVATE LANDS WORKING GROUP



